

FEITIAN



FEITIAN Technologies Co., Ltd

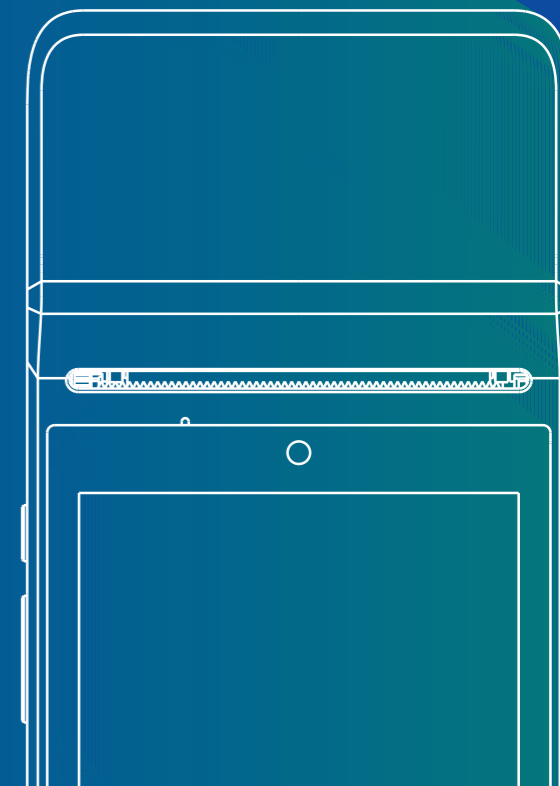
Tel: +86 10 62304466

Email: sales-support1@ftsafe.com

Web: www.ftsafe.com/payment

Add: Tower B, Huizhi Building, No. 9 Xueqing Road,
Haidian District, 100085, Beijing, China

This document is provided to you for informational purposes only. All features and specifications are subject to change without notice.
FEITIAN and the FEITIAN logo are either trademarks or registered trademarks of FEITIAN Technologies Co., Ltd. in China and/or other countries.
All other trademarks or brand names are the properties of their respective holders. © 2024 FEITIAN Technologies Co., Ltd. All rights reserved.



About FEITIAN



Founded
in 1998



HQ: Beijing
6 branches
15 offices



700+
employees
R&D >400



1000+
patents



3000+
customers



60M+ pcs
per year



Stock Code
300386



ISO9001



ISO14001



ISO27001



ISO45001



CMMI LEVEL3



Production Facility

9,398 m²
Total Area

6,166 m²
Plant Area

1,589 m²
Office Area

1,643 m²
Dormitory Area

Production Output

- ✓ 5 Million/Year Payment POS
- ✓ 45 Million/Year Chip Cards
- ✓ 50 Million/Year Power Cards

F20 Payment Android POS



SPECIFICATIONS

Operating System	Android 10
Processor	Quad-Core, 4x1.3G, A53
Memory	RAM: 2GB /ROM: 16GB
Communications	4G (LTE-FDD/LTE-TDD) + 3G (WCDMA) + 2G (GSM/GPRS), WiFi 2.4GHz/5GHz, BT4.2 (BR/EDR+BLE)
Location	GPS, Beidou, Galileo/GLONASS
Display	5.5 inch, 1280 × 720, IPS
Cameras	Rear: 8MP AF with Flash Support Scanner 1D&2D code & QR Code Front: 2MP FF
Printer	High-speed thermal printer, Paper size: 58×40mm
Battery	7.6V/2500mAh (Equal to 3.8V/5000mAh)
Magnetic Card Reader	ISO/IEC 7811, ISO/IEC 7813, Track 1/2/3, Bi-directional swiping
IC Card Reader	ISO/IEC 7816, Conform to EMV L1/L2
NFC	13.56MHz, ISO/IEC 14443, ISO18092, Type A&B, Felica, Mifare card
Card Slot	SIM*2 + PSAM*1
Peripheral Ports	Type C*1(USB2.0, OTG)
Adapter	Input: 100-240V AC, 50/60Hz 0.35A Output: 5V DC/2.0A
Physical	212.6mm (L) × 79.1mm (W) × 51.9mm (H)
Weight	427g
Environment	Operating Temperature: -10°C ~ 50°C (14°F~122°F) Storage Temperature: -20°C ~ 70°C (-4°F~158°F) Relative Humidity: 5%-96% (Non-Condensing)
Accessories	Adapter*1, USB Cable(only charging)*1, Manual*1
Certifications	PCI, EMV L1&L2, EMV Contactless L1, Paypass, payWave, AMEX ExpressPay, Discover, JCB, Pure, qUICS, Rupay, NSICC, TQM, RoHS, CE, BIS, ATEX, WEEE, CB, WPC, BIS, DGM, UN38.3, MSDS, NTRA-VOC, GSMA, Telec&JATE, ANRT, CMC

F210 Payment Android POS



SPECIFICATIONS

Operating System	Android 10
Processor	Quad-Core, 4x1.4G, A53
Memory	RAM: 1GB /ROM: 8GB
Communications	4G (LTE-FDD/LTE-TDD) + 3G (WCDMA) + 2G (GSM/GPRS), WiFi 2.4GHz, BT4.2 (BR/EDR+BLE)
Location	GPS, Beidou/GLONASS
Display	5.0 inch, 1280 × 720, IPS
Cameras	Rear: 8MP AF with Flash Front: 2MP FF
Printer	Thermal printer, Paper size: 58x40mm
Battery	3.8V/5000mAh
Magnetic Card Reader	ISO/IEC 7811, ISO/IEC 7813, Track 1/2/3, Bi-directional swiping
IC Card Reader	ISO/IEC 7816, Conform to EMV L1/L2
NFC	13.56MHz, ISO/IEC 14443, ISO18092, Type A&B, Felica, Mifare card
Card Slot	Micro SIM*2 + PSAM*1 + TF Card*1(TF, Max support 256GB)
Peripheral Ports	Type C*1(USB2.0,OTG)
Adapter	Input: 100-240V AC, 50/60Hz 0.35A Output: 5.0V DC/2.0A
Physical	197mm (L) × 82.1mm (W) × 52.5mm (H)
Weight	410g
Environment	Operating Temperature: -10°C ~ 50°C (14°F~122°F) Storage Temperature: -20°C ~ 70°C (-4°F~158°F) Relative Humidity: 5%-96% (Non-Condensing)
Accessories	Adapter*1, USB Cable(only charging)*1, Manual*1
Certifications	PCI, EMV L1&L2, EMV CL L1, Amex, Paywave, Paypass, Discover, JCB, Pure, QUICS, NTRA-VOC, WEEE, CE, GSMA, TQM(TBD), CCC, SRRC, Nal Certificate, UPTS3.0, PBOC3.0 L1& CL2, PBOC3.0 CL1, DGM\UN38.3\MSDS

F300 Payment Android POS



F300 Back Clip Scanner

SPECIFICATIONS

Operating System	Android 10
Processor	Quad-Core, 4×1.3G, A53
Memory	RAM: 1GB /ROM: 8GB
Communications	4G (LTE-FDD/LTE-TDD) + 3G (WCDMA) + 2G (GSM/GPRS), WiFi 2.4GHz, BT4.2 (BR/EDR+BLE)
Location	GPS, Beidou, GLONASS
Display	4.0 inch, 480 × 800, IPS
Camera	Rear: 2MP FF with Flash LED
Battery	3.8V/2800mAh(Built-in battery)
Magnetic Card Reader	ISO/IEC 7811, ISO/IEC 7813, Track 1/2/3, Bi-directional swiping
IC Card Reader	ISO/IEC 7816, Conform to EMV L1/L2
NFC	13.56MHz, ISO/IEC 14443, ISO18092, Type A&B, Felica, Mifare card
Card Slot	SIM*1 + PSAM*1
Peripheral Ports	Type C*1(USB2.0, OTG)
Adapter	Input: 100-240V AC, 50/60Hz 0.35A Output: 5V DC/2.0A
Audio	1W
Physical	135.5mm (L) × 65mm (W) × 16.5mm (H)
Weight	174g
Environment	Operating Temperature: -10°C ~ 50°C (14°F~122°F) Storage Temperature: -20°C ~ 60°C (-4°F~140°F) Relative Humidity: 5%-96% (Non-Condensing)
Accessories	Adapter*1, USB Cable(only charging)*1, Manual*1
Certifications	PCI, EMV L1&L2, EMV Contactless L1, Paypass, payWave, JCB, AMEX ExpressPay, Discover, Pure, qUICS, Rupay, NSICC, TQM, CE, RoHS, BIS, DGM, UN38.3, MSDS, NTRA-VOC, GSMA

F310 Payment Android POS

SPECIFICATIONS



Operating System	Android 13
Processor	Quad-Core, 4x2.0G, A53
Memory	RAM: 2GB/ROM: 16GB
Communications	4G (LTE-FDD/LTE-TDD) + 3G (WCDMA) + 2G (GSM), WiFi 2.4GHz/5GHz, BT5.0 (BR/EDR+BLE)
Location	GPS, Beidou, Galileo, GLONASS, QZSS, SBAS
Display	6.5 inch, 720 × 1600, IPS LCD, Multi-touch
Cameras	Rear Camera: 8MP AF with Flash LED, Support Scanner 1D&2D code Front Camera: 2MP FF, Support Scanner 1D&2D code
Battery	3.8V/3000mAh
Magnetic Card Reader	ISO/IEC 7811, ISO/IEC 7813, Track 1/2/3, Bi-directional swiping
IC Card Reader	ISO/IEC 7816, Conform to EMV L1/L2
NFC	13.56MHz, ISO/IEC 14443, ISO18092, Type A&B
Keys / Buttons	Power Key, Function key, Volume+/- key
Sensor	Proximity Sensor(P-Sensor), Light Sensor(L-Sensor)
Multimedia	Audio speaker
Card Slot	SIM*1 + PSAM*2 or SIM*2 + PSAM*1, 1*SD(up to 1TB)
Peripheral Ports	Type C*1 (USB2.0, OTG), Pogopin(5PIN)*1, Pogopin(8PIN)*1
Adapter	Input: 100-240V AC, 50/60Hz 0.35A Output: 5V DC/2.0A
Physical/Weight	173mm (L) × 82.5mm (W) × 17.2mm (H) /278g
Environment	Operating Temperature: -10°C ~ 50°C (14°F~122°F) Storage Temperature: -20°C ~ 70°C (-4°F~158°F) Relative Humidity: 5%-96% (Non-Condensing)
Accessories	Adapter*1, USB Cable(only charging)*1, Manual*1
Certifications	PCI, EMV L1/L2, EMV CL L1, Amex, Paywave, Paypass, Discover, Pure, TQM, QUICS, CE, FCC, ROHS

F310 All-in-one Terminal



F310-1 Printer Module

Printing Method	Thermal dot printing
Number of Dots	384dots/line
Resolution	8dots/mm (203dpi)
Print Width	58mm(57.5±0.5mm)
Max Printing Speed	70 mm/s
Roll Diameter	40mm
Physical /Weight	89.8(L)mm*82.7(W)mm*76.7(H)mm/375g



F310-2 Unattended Module

Cameras	Front Camera: 2MP FF, Support Scanner 1D&2D code Rear Camera: None
Ports	RS232-A(RJ45)*1, RS232-B(RJ45)*1, LAN(RJ45)*1, PWRDIG.I/O*1, MDB-M EXE*1, MDB-S*1, 4G SMA*1, Type-A*1, Type-C(USB2.0, OTG)
Ingress Protection Rating	IP 54
Physical/Weight	195.7(L)*101(W)*64.2(H)mm/565g



F310-3 Battery Options

Battery	5000mAh/3.8V
Physical/Weight	173(L)mm*81(W)mm*26.4(H)mm/439.5g
F310-8 Fiscal	
Fiscal Module	USB/37.15mm(L)*15.70mm(W)*6.40mm(H), UART/30.00mm(L)*29.95mm(W)*9.40mm(H)
Battery	3000mAh/3.8V
Physical/Weight	173(L)mm*81(W)mm*26.4(H)mm/388.5g



F310-4 Scanner Module

Motion Tolerance	High motion tolerance(6 m/s)
Max Image Speed	Maximum image capture rate of 120 fps
Scan Mode	Supports 1D, 2D, and OCR as well as Packaging bar codes and screen bar codes
Physical/Weight	50.0(L)mm*89.8(W)mm*27.0(H)mm/35g

F310 All-in-one Terminal

F310-5 Protective Case

Ingress Protection Rating	IP66
Drop Height	1.8m
Scanner	
Motion Tolerance	High motion tolerance (6 m/s)
Max Image Speed	Maximum image capture rate of 120 fps
Scan Mode	Supports 1D, 2D, and OCR as well as Packaging barcodes and screen bar codes
Physical/Weight	191.5(L)mm*95.4(W)mm*97.2(H)mm/440g

Ingress Protection Rating	IP66
Drop Height	1.8m
Scanner	
Motion Tolerance	High motion tolerance (6 m/s)
Max Image Speed	Maximum image capture rate of 120 fps
Scan Mode	Supports 1D, 2D, and OCR as well as Packaging barcodes and screen bar codes
Physical/Weight	232(L)mm*95.4(W)mm*97.2(H)mm/530g



F310-6 Charging Cradle

Ports	Type-C*1, RJ45*1, Type-A*2, RJ11*1(R232)
Physical /Weight	159.6(L)mm*100(W)mm*51.0(H)mm/180g

F310-7 Multi Dock

Dock Screen	LCD 2.4 inch, TFT 240*320 (Display the payment QR code)
Camera	0.3M FF*2(640*480) Support Scanner 1D&2D code
Ports	Type-C*1(5V2A), RJ45*1, Type-A*2(USB2.0), RJ11*1(Cash drawer)
Physical /Weight	279(L)mm*100(W)mm*75.5(H)mm/408g



F310 All-in-one Terminal



F310-9 Customer Display Module

Printer Screen	1.65 inch 128*64Dots Graphic
2" Printer(58mm)	
Printing Method	Thermal dot printing
Number of Dots	384dots/line
Resolution	8dots/mm (203dpi)
Paper Size	58*40mm
Max Printing Speed	70 mm/s
Physical/Weight	89.8(L)mm*86.2(W)mm*76.7(H)mm/146g



F310-10 Capacitive Fingerprint Module

2" Printer(58mm)	
Number of Dots	384dots/line
Resolution	8dots/mm (203dpi)
Print Size	58*40mm
Max Printing Speed	70 mm/s
Capacitive fingerprint module	
Image Size	256*360 pixels
Image Resolution	508 dpi
Sensor Type	Semiconductor capacitive
Physical/Weight	89.8(L)mm*91.7(W)mm*76.7(H)mm/147g



F310-12 Optical Fingerprint Module

ID optical fingerprint module (CBM V3, SM-92, Slim2/2s, Slim3, FS81)

Image Quality Standards	FBI PIV/Mobile ID FAP30 compliant
Sensor Type	Optical
Resolution	500 dpi
Gray Scale	256 level
Physical/Weight	115(L)mm*89.8(W)mm*25.2(H)mm/107g



F310-15 Identification Printer Module

ID optical fingerprint module

Image Quality Standards	FBI PIV/Mobile ID FAP30 compliant
Sensor Type	Optical
Resolution	500 dpi
Gray Scale	256 level

2" Printer(58mm)

Printing Method	Thermal dot printing
Number of Dots	384dots/line
Resolution	8dots/mm (203dpi)
Print Size	58*40mm
Max Printing Speed	70 mm/s
Physical/Weight	107.6mm(L)*90.1(W)*68.35(H)mm/271g

F310 All-in-one Terminal



Self-service kiosk A

F310-17 Self-service Kiosk A

Face Recognition Camera	16MP AF, Support Scanner 1D&2D code, Face recognition Optional: 5MP AF
Cradle	
Interface	Type-C*1(USB2.0), Type-C*1(5V2A), RJ45*1
Bracket The Minimum Height is not low	300mm
Bracket The Maximum Height is not low	437mm
Base Diameter	130mm
Inclination	-10°~45°
Revolve	-170°~170°
Physical/Weight	Φ130mm*300~437(H)mm/585g



F310-18 Scan Print Module

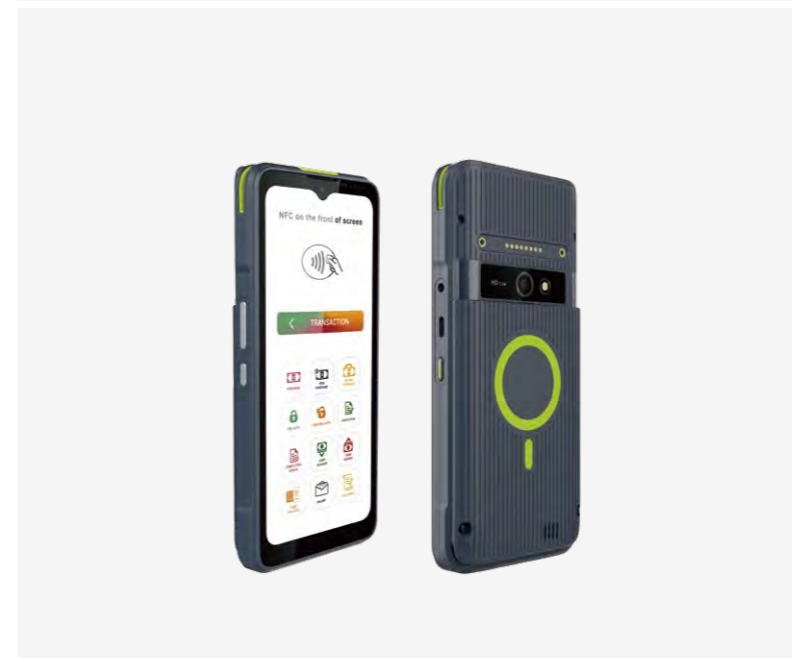
Scanner	
Motion Tolerance	High motion tolerance (6 m/s)
Max Image Speed	Maximum image capture rate of 120 fps
Scan Mode	Supports 1D, 2D, and OCR as well as Packaging barcodes and screen bar codes
2" Printer(58mm)	
Printing Method	Thermal dot printing
Number of Dots	384dots/line
Resolution	8dots/mm (203dpi)
Max Printing Speed	70 mm/s
Print Size	58*40mm
Physical/Weight	91.4(L)mm*89.8(W)mm*76.7(H)mm/112g



Self-service kiosk B

F310-17 Self-service Kiosk B

Front Camera	16MP AF, Support Scanner 1D&2D code, Face recognition
Cradle	
Interface	Type-C*1, Type-C*1(USB2.0, OTG),RJ45*1, USB2.0 Type-A*2, RJ11*1(R232)
2" Printer(58mm)	
Print Size	58*40mm
Max Printing Speed Paper	80 mm/s
Bracket The Minimum Height is not low	300mm
Bracket The Maximum Height is not low	437mm
Inclination	-10°~45°
Revolve	-170°~170°
Physical/Weight	195(L)mm*100(W)mm*437(H)mm/780g
Palmar veins	
Vein Scan Distance	Brush the palm within the distance of 5cm~12cm
Scan Mode	Support Scanner 1D&2D code



F310-19 NFC/Wireless Charging Module

Coil Diameter	Φ42 coils
Current Impedance	The current impedance is less than 250mohm
Coil Sensitivity	Quality factor Q>25 The inductance is 9.5uH ±10%
Fast Charging	10W wireless fast charging
Fixation	Powerful magnetic function
Physical/Weight	173(L)mm*82.5(W)mm*19.5(H)mm/315g

F360 Payment Android POS

SPECIFICATIONS



Product Features

The product is equipped with adjustable RGB multi-color lights. We can customize the color of the light strips and the marquee effect based on the colors of the client's corporate logo, allowing us to have a stylish and exclusive point-of-sale product.

Operating System	Android 13
Processor	Quad-Core, 4×A53 @2.0GHz
Memory	RAM: 1GB /ROM: 8GB
Communications	4G (LTE-FDD/LTE-TDD) + 3G (WCDMA) + 2G (GSM/GPRS), WiFi 2.4GHz/5GHz, BT5.0 (BR/EDR+BLE)
Location	GPS, Beidou, Galileo, GLONASS
Display	3.2 inch, 320 × 240Pixel, IPS LCD, Two Point-touch
Camera	Front Camera: 0.3MP FF, Support Scanner 1D&2D code
Battery	Li-ion Polymer 3.7V/2000mAh
IC Card Reader	ISO/IEC 7816, Conform to EMV L1/L2
NFC	13.56MHz, ISO/IEC 14443, ISO18092, Type A&B
Keys / Buttons	Page left key, menu key, right page key, delete key, back key, confirm key
Indicator	Grass green(No swipe), Orange-red(Credit card), Gradient color(Swipe is done)
Card Slot	SIM*1(nano) + PSAM*1(standard)
Peripheral Ports	Type C*1(USB2.0,OTG), Pogopin*1(8PIN)
Adapter	Input: 100-240V AC, 50/60Hz 0.35A Output: 5V DC/2.0A
Physical	Φ98.5mm × 22.9mm (H)
Weight	145g
Environment	Operating Temperature: -10°C ~ 50°C (14°F~122°F) Storage Temperature: -20°C ~ 70°C (-4°F~158°F) Relative Humidity: 5%-96% (Non-Condensing)
Accessories	Adapter*1, USB Cable(only charging)*1, Manual*1
Certifications	PCI, Paywave(VISA), Paypass(Mastercard), Pure, Amex, EMV L1/L2, EMV Contactless L1, D-PAS(DISCOVER), QUICS, RoHS, TQM, CE, FCC

F100 Non-Payment Android POS



SPECIFICATIONS

Operating System	Android 11
Processor	Quad-Core, 4x2.0G, A53
Memory	RAM: 2GB /ROM: 16GB
Communications	4G (LTE-FDD/LTE-TDD) + 3G (WCDMA) + 2G (GSM/GPRS), WiFi 2.4GHz/5GHz, BT5.0
Location	GPS/A-GPS, GLONASS, Beidou, Galileo
Display	5.0 inch, 1280 × 720, IPS
Camera	Rear: 8MP AF with Flash
Printer	Thermal printer, Paper size: 58×40mm
Battery	3.8V/4000mAh
Keys / Buttons	Power Key, Volume+/-
NFC	13.56MHz, ISO/IEC 14443, ISO18092, Type A&B, Felica, Mifare card
Card Slot	SIM*2 + TF Card*1
Peripheral Ports	Type C*1(USB2.0, OTG), 3.5mm Audio Jack*1
Adapter	Input: 100-240V AC, 50/60Hz 0.35A Output: 5V DC/2.0A
Audio	1W
Physical	197mm (L) × 77mm (W) × 52.6mm (H)
Weight	323g
Environment	Operating Temperature: -10°C ~ 50°C (14°F~122°F) Storage Temperature: -20°C ~ 70°C (-4°F~158°F) Relative Humidity: 5%-96% (Non-Condensing)
Accessories	Adapter*1, USB Cable(only charging)*1, Manual*1
Certifications	CE, BIS, WPC, DGM, UN38.3, MSDS, NTRA-VOC, GSMA Google GMS Safety net Compliance

F310A Non-Payment Android POS



Compatible with all accessories for F310 Payment

SPECIFICATIONS

Operating System	Android 14
Processor	Quad-Core, 4x2.0G, A53
Memory	RAM: 2GB/ROM: 16GB
Communications	4G (LTE-FDD/LTE-TDD) + 2G (GSM) WiFi 6GHz, BT5.2
Location	GPS
Display	6.5 inch, 720 × 1600 Pixel, Multi-touch, With protective film and removal label
Cameras	Rear Camera: 8MP AF with Flash LED Front Camera: 2MP FF
Battery	3.7V/3000mAh
NFC	13.56MHz, ISO/IEC 14443, ISO18092, Type A&B
Keys / Buttons	Power Key, Function key, Volume+/- key
Audio	1W
Peripheral Ports	1*USB Type-C(USB2.0,OTG), 3.5mm Audio Jack*1, 1*Pogopin (5PIN), 1*Pogopin(8PIN)
Card Slot	SIM*1 + PSAM*1 + TF*1
Adapter	Input: 100-240V AC, 50/60Hz 0.35A Output: 5V DC/2.0A
Physical/Weight	173mm (L) × 82.5mm (W) × 17.2mm (H) /278g
Environment	Operating Temperature: -10°C ~ 50°C (14°F~122°F) Storage Temperature: -20°C ~ 70°C (-4°F~158°F) Relative Humidity: 5%-96% (Non-Condensing)
Accessories	Adapter*1, USB Cable(only charging)*1, Manual*1
Certifications	CE, FCC, VOC, WEEE, GSMA, RoHS, UN38.3, MSDS, Google GMS Safety net Compliance

F600 Payment Android TAB



F600 FP Fingerprint
Semiconductor capacitive type:
Aratek A400-M, FBI / STQC



F600 FP Fingerprint
Optical type:
Morpho CBM-E3, FBI

SPECIFICATIONS

Operating System	Android 9
Processor	Octa-Core, 8×1.8G, A53
Memory	RAM: 2GB /ROM: 16GB
Communications	4G (LTE-FDD/LTE-TDD) + 3G (WCDMA) + 2G (GSM/GPRS), WiFi 2.4GHz/5GHz, BT4.2 (BR/EDR+BLE)
Location	GPS, Beidou, GLONASS
Display	8.0 inch, 1280 × 800, IPS
Cameras	Rear: 8MP AF with Flash LED Front: 5MP FF
Battery	3.8V/8000mAh
Magnetic Card Reader	ISO/IEC 7811, ISO/IEC 7813, Track 1/2/3, Bi-directional swiping
IC Card Reader	ISO/IEC 7816, Conform to EMV L1/L2
NFC	13.56MHz, ISO/IEC 14443, ISO18092, Type A&B, Felica, Mifare card
Keys / Buttons	Power Key, Volume +/-, Function Key
Card Slot	SIM*2 + PSAM*1
Peripheral Ports	Type C*1(USB2.0, OTG)
Adapter	Input: 100-240V AC, 50/60Hz 0.35A Output: 5V DC/2.0A
Physical	251mm (L) × 136mm (W) × 15.8mm (H)
Weight	705g
Environment	Operating Temperature: -10°C ~ 50°C (14°F~122°F) Storage Temperature: -20°C ~ 60°C (-4°F~140°F) Relative Humidity: 5%-96% (Non-Condensing)
Accessories	Adapter*1, USB Cable(only charging)*1, Manual*1, Ejection Pin*1
Certifications	PCI, EMV L1&L2, EMV CL L1, Amex, paywave, Paypass, Discover, JCB, Pure, QUICS, TQM(TBD), DGM&UN38.3&MSDS, NTRA-VOC, CE, GSMA, WEEE

M200 Unattended Android POS



SPECIFICATIONS

Operating System	Android 11
Processor	Quad-Core, 4x2.0G, A53
Memory	RAM: 2GB /ROM: 16GB
Bluetooth	BT4.2 (BR/EDR+BLE)
Wifi	2.4GHz/5GHz, 802.11 b/g/n/ac
Location	GPS, Beidou, GLONASS
Display	5.0 inch, 720 × 1280, IPS
Camera	2MP FF
Magnetic Card Reader	ISO/IEC 7811, ISO/IEC 7813, Track 1/2/3, Bi-directional swiping
IC Card Reader	ISO/IEC 7816, Conform to EMV L1/L2
NFC	13.56MHz, ISO/IEC 14443, ISO18092, Type A&B, Felica, Mifare card
Card Slot	SIM*2 + PSAM*2
Peripheral Ports	RS232*2, RJ45*1, USB-A*1, USB-C*1, SMA*1, MDB-S*1, MDB-M&EXE*1, Audiojack*1, PWR-Dig.I/O *1, HDMI*1, TF-Card*1
Adapter	Input: 100-240V AC, 50/60Hz 1.5A Output: 24.0V DC/2.7A
Audio	1W
Physical	146 mm(L) × 105 mm(W) × 57 mm(H)
Weight	723g
Environment	Operating Temperature: -20°C ~ 70°C (-4°F~158°F) Storage Temperature: -30°C ~ 80°C (-22°F~176°F) Relative Humidity: 5%-96% (Non-Condensing)
Accessories	Adapter*1, USB Cable*1, Manual*1
Certifications	PCI, EMV L1&L2, EMV Contactless L1 Paypass, payWave, AMEX ExpressPay, Discover, Quics, JCB, Pure, TQM FCC, CE, RoHS, IP65, IK08, ATEX

ePayPOS600



SPECIFICATIONS

Operating System	RTOS
Processor	32-bit RISC Core
Memory	128KB RAM, 4MB Flash
Display	1.4 inch, 128 × 64, Mono
Bluetooth	BT4.2 (BR/EDR+BLE)
Battery	3.7V/500mAh
Magnetic Card Reader	ISO/IEC 7811, ISO/IEC 7813, Track 1/2/3, Bi-directional swiping
IC Card Reader	ISO/IEC 7816, Conform to EMV L1/L2
NFC	13.56MHz, ISO/IEC 14443, ISO18092, Type A&B, Felica, Mifare card
Keys / Buttons	5 × 3 PIN pad 15 keys
Audio	BEEP
Adapter	Input: 100-240V AC, 50/60Hz 0.35A Output: 5.0V DC/1.0A
Peripheral Ports	Micro USB 2.0
Physical	113.6 mm(L) × 59 mm(W) × 14 mm(H)
Weight	80g
Environment	Operating Temperature: 0°C ~ 45°C (32°F~113°F) Storage Temperature: -10°C ~ 60°C (14°F~140°F) Relative Humidity: 5%-96% (Non-Condensing)
Accessories	USB Cable(only charging)*1, Manual*1
Certifications	PCI, EMV L1, EMV CL1, EMV L2, Paywave, Paypass, Amex, Discover, JCB, Pure, QUICS, Rupay, TQM CE, FCC, BIS, ANRT, WPC, PBOC3.0 L1& CL2, PBOC3.0 CL1, DGM\UN38.3\MSDS

T20 Payment Linux POS



SPECIFICATIONS

Operating System	Linux
Processor	Dual-core, 2x1.3G, A53
Memory	RAM: 256MB / ROM: 512MB
Communications	4G (LTE-FDD/LTE-TDD) + 3G (WCDMA) + 2G (GSM/GPRS), WiFi 2.4GHz, BT4.2 (BR/EDR+BLE)
Location	GPS + Beidou or GPS + Glonass
Display	3.5 inch, 320 × 480, TFT
Camera	Rear Camera: 0.3MP, Support Scanner 1D&2D code
Printer	High-speed thermal printer, Paper size: 58×40mm
Battery	3.7V/5200mAh
Magnetic Card Reader	ISO/IEC 7811, ISO/IEC 7813, Track 1/2/3, Bi-directional swiping
IC Card Reader	ISO/IEC 7816, Conform to EMV L1/L2
NFC	13.56MHz, ISO/IEC 14443, ISO18092, Type A&B, Felica, Mifare card
Card Slot	Normal SIM*2 + PSAM*2 + TF Card*1
Peripheral Ports	Type-C*1(USB2.0)
Adapter	Input: 100-240V AC, 50/60Hz 0.35A Output: 5V DC/2.0A
Physical	198.2.6mm (L) × 80.7mm (W) × 53.6mm (H)
Weight	410g
Environment	Operating Temperature: -10°C ~ 50°C (14°F~122°F) Storage Temperature: -20°C ~ 70°C (-4°F~158°F) Relative Humidity: 5%-96% (Non-Condensing)
Accessories	Adapter*1, USB Cable (only charging)*1, Manual*1
Certifications	PCI, EMV L1&L2, EMV CL L1, Paypass, Paywave, Amex, Discover, Pure, CE, TQM, UN38.3, MSDS, GSMA

T50 Payment PIN Pad



SPECIFICATIONS

Operating System	RTOS
Processor	32-bit RISC Core
Memory	RAM: 1MB / ROM: 4MB
Display	2.4 inch, 240*320, TFT Resistive touchscreen, support electronic signature
Camera	0.3M pixel front scanner, support 1D/2D code payment
Magnetic Card Reader	ISO/IEC 7811, ISO/IEC 7813, Track 1/2/3, Bi-directional swiping
IC Card Reader	ISO/IEC 7816, Conform to EMV L1/L2
NFC	13.56MHz, ISO/IEC 14443, Type A&B
Keys / Buttons	16 Keys: 0 ~ 9 Enter Clear Cancel Function Up Down
Audio	1W
Card Slot	PSAM*2
Peripheral Ports	USB
Adapter	5V/500mA
Physical	151.4mm (L) × 80.5mm (W) × 56.1mm (H)
Weight	212g
Environment	Operating Temperature: -10°C ~ 50°C (14°F~122°F) Storage Temperature: -20°C ~ 70°C (-4°F~158°F) Relative Humidity: 5%-96% (Non-Condensing)
Certifications	PCI, EMV L1&L2, EMV Contactless L1 Paypass, payWave, AMEX ExpressPay, Discover, Pure, TQM CE, NTRA-VOC, ANRT, WEEE

M300/M500 Android ECR Cash Register

M300



M500



M300 Options



M500 Options



M300 with PIN PAD T50



M500 with PIN PAD T50



SPECIFICATIONS

Operating System	Android 11	
Processor	64 bit Quad-Core, Cortex-A55, 4x2.0G	
Memory	RAM: 2GB /ROM: 16GB	
Ethernet	LAN 100M	
Bluetooth	BT4.2(BR/EDR+BLE)	
Wifi	2.4GHz/5GHz, 802.11 b/g/n/ac	
Display	15.6"(1920*1080)+15.6"(1920*1080) CTP /Multi-Point Touch Panel	
Printer	M300	Not Available
	M500	Paper size:80mm*80mm /Print speed: Up to 200mm/s
Peripheral Ports	Type A*5, RJ11*1, RJ12*1, DC*1, RJ45*1, 3.5mm Earphone port*1	
Keys / Buttons	Power key	
Audio	3W	
Adapter	Input: 100-240V AC, 50/60Hz 2.0A Output: 24.0V DC/2.75A	
Card Slot	TF Card*1	
Environment	Operating Temperature: -10°C ~ 50°C(14°F~122°F) Storage Temperature: -20°C ~ 70°C(-4°F~158°F) Relative Humidity: 5%-96% (Non-Condensing)	
Physical	M300	382 mm(L) × 190 mm(W) × 352 mm(H)
	M500	382 mm(L) × 190 mm(W) × 400 mm(H)
Accessories	Adapter*1, Manual*1	
Certifications	CE, RoHS, WEEE, NTRA-VOC	

M10 Static QR Sound Box



SPECIFICATIONS

Processor	Cortex-R5 RTOS
Memory	RAM: 4MB / ROM: 4MB
Communications	4G (FDD-LTE: B1/B3/B5/B7/B8/B20, TDD-LTE: B38/B40/B41)
Speaker	4Ω/3W
Keys / Buttons	Power, Volume +/-, Function, Reset
Peripheral Ports	Type-C
Indicator	Red, green, and blue indicator
Battery	2000mAh
Card Slot	SIM*1
Power	Support 5V-1A power adapter input
Physical	132mm(L) × 65mm (W) × 73mm (H) With QR Code Bracket: 132mm(L) × 65mm(W) × 181mm(H)
Weight	223g
Environment	Operating Temperature: -10°C ~ 50°C (14°F~122°F) Storage Temperature: -20°C ~ 60°C (-4°F~140°F) Relative Humidity: 5%-96% (Non-Condensing)

M20 Dynamic QR Sound Box



SPECIFICATIONS

Processor	Cortex-R5 RTOS
Memory	RAM: 8M / ROM: 8M
Communications	4G (FDD-LTE: B1/B3/B5/B8, TDD-LTE: B34/B38/B39/B40/B41)
Display	2.4inch, 240 × 320
Audio	4Ω/3W
Keys / Buttons	Power, Volume +/-, Function, Reset
Peripheral Ports	Type-C*1
Indicator	Red, green and blue indicator
Battery	3.7V/2000mAh
Card Slot	SIM*1
Keyboard	Buttons: with 0-9/00 number keys, function key, cancel key, enter key, etc Display: Segment code display, can display the amount of payment, network status, etc
Power	Support 5V-1A power adapter input
Physical	90mm(L) × 90mm (W) × 116mm (H)
Weight	210g
Environment	Operating Temperature: -10°C ~ 50°C (14°F~122°F) Storage Temperature: -20°C ~ 70°C (-4°F~158°F) Relative Humidity: 5%-96% (Non-Condensing)

M30 Static Printer QR Sound Box



SPECIFICATIONS

Processor	Cortex-A5 RTOS
Memory	RAM: 16MB / ROM: 16MB
Communications	4G (FDD-LTE: B1/B3/B5/B8, TDD-LTE: B34/B38/B39/B40/B41) 2G (GSM: 900MHz/1800MHz) WiFi: 2.4GHz
Network Switching	4G and WiFi dual mode network connection scheme, self evaluating network performance and switching
Keys / Buttons	On/Off, Volume +/-, Function Key, Paper Feed Key, Reset Hole
Printer	58mm line sensitive thermal printer, printing width: 48mm, paper bin diameter: 50mm, automatic, paper cutting: optional, printing speed: 80mm/s max, instruction set: ESC/POS, font: GB18030, image printing: supported, barcode printing: supported, QR code printing: QR
Indicator	Red, green and blue indicator
Voice Module	Built in TTS function module, supporting transaction amount announcement and customized advertising announcement
Speaker	4 Ω/3W, up to 100dB(35cm)
Battery	7.4V/2000mAh
Peripheral Ports	DC power interface, USB-B, Micro USB
Power	Support 5V-2A power adapter input
Physical	142mm(L) × 100mm (W) × 120mm (H)
Weight	440g(including battery)
Environment	Operating Temperature: 0°C ~ 50°C (32°F~122°F) Storage Temperature: -20°C ~ 60°C (-4°F~140°F) Storage Relative Humidity: 5%-96% (Non-Condensing)

M30N QR & NFC Sound Box



SPECIFICATIONS

Processor	Cortex-A5 RTOS
Memory	RAM: 16MB / ROM: 16MB
Communications	4G (FDD-LTE: B1/B3/B5/B8, TDD-LTE: B34/B38/B39/B40/B41) WiFi: 2.4GHz
Location	GPS, Beidou
Scan Code Method	Scanned payment, supporting QR Code, Code128, Code39 and other code systems
Keyboard	Support for external financial keyboards
Printer	58mm line sensitive thermal printer, printing width: 48mm, paper bin diameter: 50mm, automatic paper cutting: optional, printing speed: 80mm/s max, instruction set: ESC/POS, font: GB18030, image printing: supported, barcode printing: supported, QR code printing: QR
Printing Function	Support standard font library, common QR code printing, printing status detection, and paper feeding function
NFC	13.56MHz, ISO/IEC 14443 Type A&B, ISO15693, Mifare card
Physical Interface	DC power interface, USB-B, Micro USB
Voice Module	Built in TTS function module, supporting transaction amount announcement
Indicator	Red, green and blue indicator
Keys / Buttons	On/Off, Volume +/-, Function Key, Paper Feed Key, Reset Hole
Speaker	4 Ω/3W, up to 110dB(10cm)
Power	Support 8.5V-3A power adapter input
Physical	142mm(L) × 100mm(W) × 142mm(H)
Environment	Operating Temperature: 0°C ~ 50°C (32°F~122°F) Storage Temperature: -20°C ~ 60°C (-4°F~140°F) Storage Relative Humidity: 5%-96% (Non-Condensing)

Charging Cradle

F20 Charging Cradle



Multi Dock

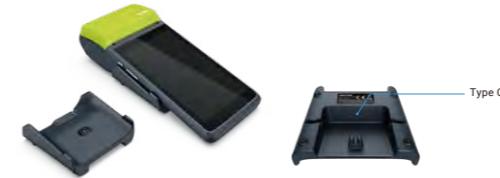
Ports	Type-C*1, RJ45*1, RJ11*1, Type-A*2, Scanner*1
Pogo Pin	8 pin
Certification	CE, RoHS



Multi Dock Lite

Ports	Type-C*1, RJ45*1, RJ11*1, Type-A*2
Pogo Pin	8 pin
Certification	CE, RoHS

F100 Charging Cradle



Charging Cradle

Input	USB Type-C 5V/2A
Pogo Pin	2 pin
Certification	CE, RoHS

F210 Charging Cradle



Charging Cradle

Input	USB Type-C 5V/2A
Pogo Pin	2 pin
Certification	CE, RoHS



Charging Cradle

Input	USB Type-C 5V/2A
Pogo Pin	2 pin
Certification	CE, RoHS



Multi-function Battery Cover

Ports	Type-C*1, RJ45*1
Pogo Pin	8 pin
Certification	CE, RoHS



Multi-function Dock Lite

Ports	Type-C*1, RJ11*1, RJ45*1, USB Type-A*2
Pogo Pin	5 pin
Certification	CE, RoHS



Multi-function Dock Lite

Ports	Type-C*1, RJ11*1, RJ45*1, USB Type-A*2
Pogo Pin	6 pin
Certification	CE, RoHS

Charging Cradle

T20 Charging Cradle

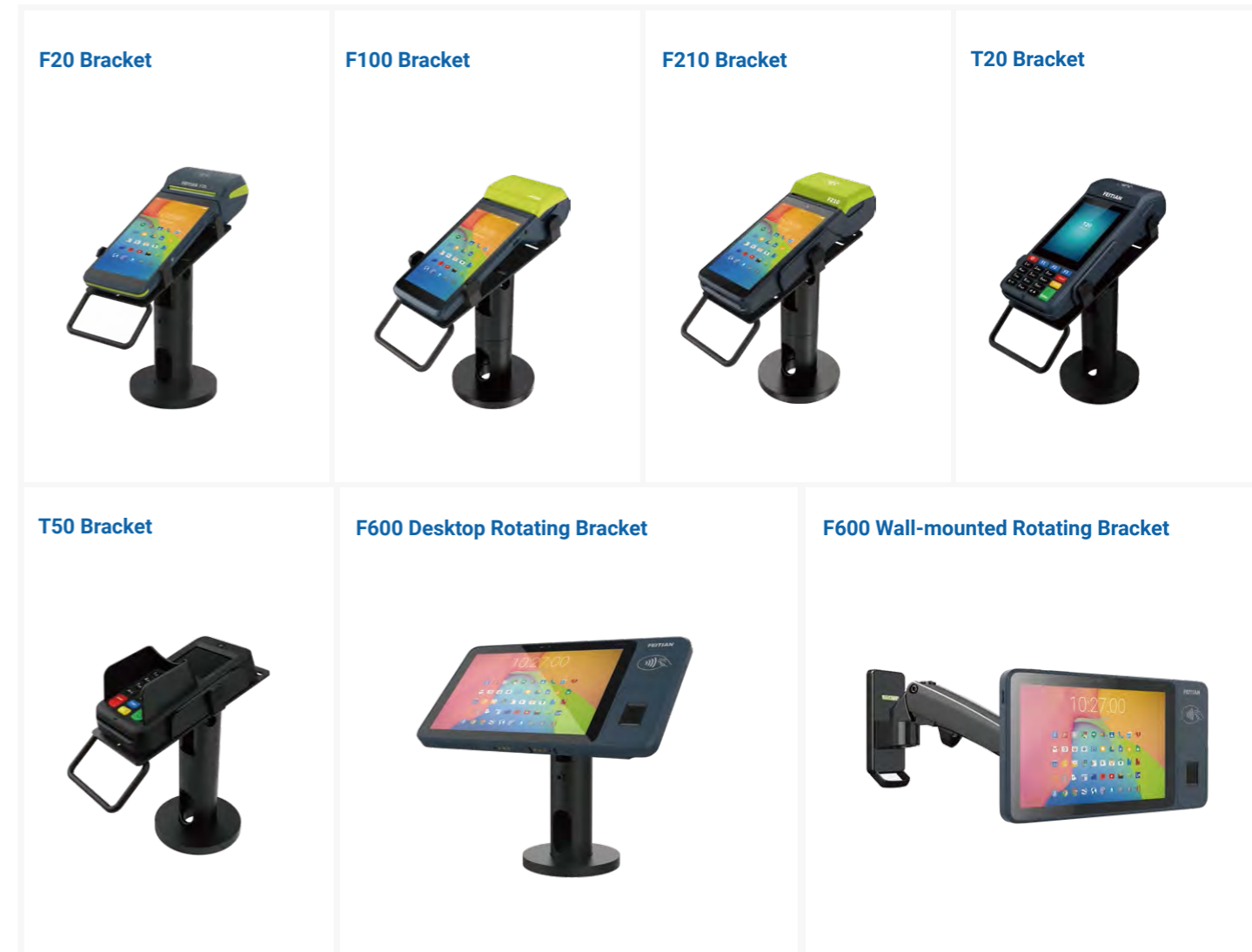


Back Clip

F300 Back Clip Barcode Scanner

Dimensions	166.5*68.60*35.2mm
Image Size	640*480 Pixels 1D&2D
Field of View	34°(H)*27°(V)
Motion Tolerances	up to 25in(63.5cm) per second

Bracket



Silicone Covers (Customized colors)

F20



F100



F210



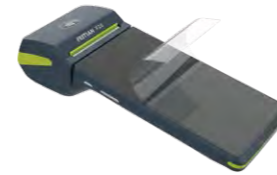
F300



F600



F20



F100



F210



F600



F300



F310



T20



T50



Printer

P10



Printing Technology	Thermal printing
Paper Width	58mm x 50mm
Print Speed	60-90mm/s
Print Life	50KM
Interface	USB+ Bluetooth
Power Adapter	Type-C, DC 5V/1A
Lithium Battery	1800mAh/7.4V
Operating System	Android, IOS, Windows
Dimensions	112mm x 81mm x 56mm
Certification	CE

P20



Printing Technology	Thermal printing
Paper Width	58mm x 50mm
Print Speed	60-70mm/s
Print Life	50KM
Interface	USB+ Bluetooth
Power Adapter	DC 9V/1A
Print Instruction	ESC
Operating System	Android, IOS, Windows
Dimensions	120mm x 110mm x 95mm
Certification	CE

P30



Printing Technology	Thermal printing
Paper Width	48-80±0.5mm
Print Speed	300mm/s
Print Life	150KM
Interface	USB + RS232/LAN(Optional) USB+RS232 + BT/WIFI (Optional) USB + LAN+BT/WIFI (Optional)
Cutters	AutomaticCutter: Half-Cut
Power Adapter	DC24V/2.5A
Operating System	Microsoft® Windows/Linux
Dimensions	133mm x 126mm x 130mm
Certification	CE

Barcode Scanner/Cash Box

F26



Scan Modes	Trigger /Auto-sense /Continuous
Scanning Accuracy	≥4mil/0.1mm (PCS90%, CODE39)
Size(L*W*H)	Scanner 165 x 60 x 84mm
Certification	CE, FCC, ROHS

F68



Scan Modes	Manual /Auto-sense
Scanning Accuracy	≥5mil/0.127m (PCS90%, CODE39)
Size(L*W*H)	Scanner 150mm x 70mm x 95mm
Certification	CE, FCC, ROHS

Electronic Scale



Display	5*8 digits LCD display
Pan Size	344.9*262.4mm
Maximum Weighing	76/15kg, 15/30kg
Certification	CE

FT-405D



Size(W*L*H)	405 x 420 x 110mm
Bill Width	84/87/85/85mm
Coin Width	80/84/84/81mm
Certification	CE, FCC, ROHS, EMC

FTA-300



Size(W*L*H)	300 x 360 x 80mm
Bill Width	81.8/81.8/84.2mm
Coin Width	71.6/56/56/56.8mm
Certification	CE, ROHS

FTA-200



Size(W*L*H)	335 x 368 x 80mm
Bill Width	78/73/73/70mm
Weighth	3.6kg
Certification	CE, ROHS

FT STORM



STORM

Smart Terminal Operations Remote Manager

The next generation TMS platform realizes the management of traditional POS, Android Smart Phones, Android POS and Mobile POS via one platform.



STORM-TMS

<p>Marketing Manager</p>	<p>Transaction Manager</p>	<p>Key Manager</p>
<p>System Manager</p>	<p>Application Manager</p>	<p>Device Manager</p>
<p>Omni channels Support Android Phones for MDM Functions</p> <p>Web Android</p>		<p>Omni POS</p> <p>Any Android POS Traditional POS Any mPOS</p>

STORM-TMS Security Compliance

	<ul style="list-style-type: none"> Strong Password Enforcement Instant Lock/Unlock Features Remote Wipe Out OS Update Management FRP Deactivation Factory Reset Block 	<p>Robust combination of technology & cloud services to cater the evolving market</p>
--	---	--

FT SmartPay



FT SMARTPAY

Android Merchant/Cashier Application

A standard, flexible, stable Android payment application (APK format), with a complete bank card transaction capacity, mobile payment capacity and value-added features.

EMV UPI Visa MasterCard AMEX JCB Discover MIR/RuPay/PURE/NSIC CS	Key Methods MK/SK DUKPT	Key Loading Device Manual Input From IC card Download From STORM Download From Bank Acquirer System	Card Operation Type Contact ICC Contactless ICC Magnetic stripe cards	Parameters Config. Local Config Import from SDCard Download from STORM Download from Bank Acquirer System
Store Manager Inventory Staff Supplier Purchase Expense Loyalty /Rewards	Code/Mobile Payments POS scan customer Customer scan POS Inquiry Refund Cancel Coupon Scan	Printer Support Local Printer BT Printer IP Printer(ESC/POS)	Payment Types Cash/Card/Mobile Payments Alipay Instalments Tips Offline Sales ECR Payments	Others Topup / Evouchers Bill Payments ON US Cards Multi Language mPOS and POS Support Android Smart Phone Support ECR Support



Business Management in One APP

- Customer loyalty program
- Purchase
- Inventory
- Report
- Supplier Management
- Pre-Auth
- Expense
- User Management
- Order history
- Card Balance
- Reconciliation

Omnichannel Payment in One APP

Cash

Bank Card

QR Code

Paypal

FT SmartPay Compatibility for L3 Payment Certification

Supported Protocols: Nexio/ISO8583/Hypercom/TLV Messaging/MQTT



FT SmartPay Mobile Payment Compatibility





FTPAY

Turn Your Smartphone into a Smart Payment Terminal

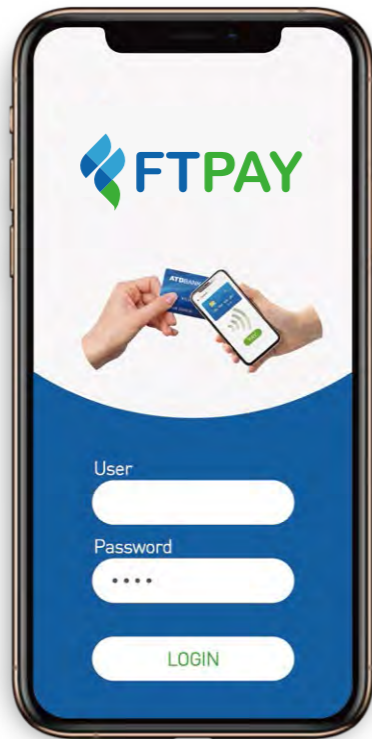
The innovative SoftPOS solution that empowers you to take payments on-the-go. With FT PAY, you can easily turn your smartphone or tablet into a powerful payment terminal, accepting payments securely and efficiently.

Key Features



02. Mobility and Flexibility:

Transform any NFC-enabled smartphone or tablet into a fully functional POS system, empowering businesses to accept payments anytime, anywhere.



01. Secure and Contactless Payments:

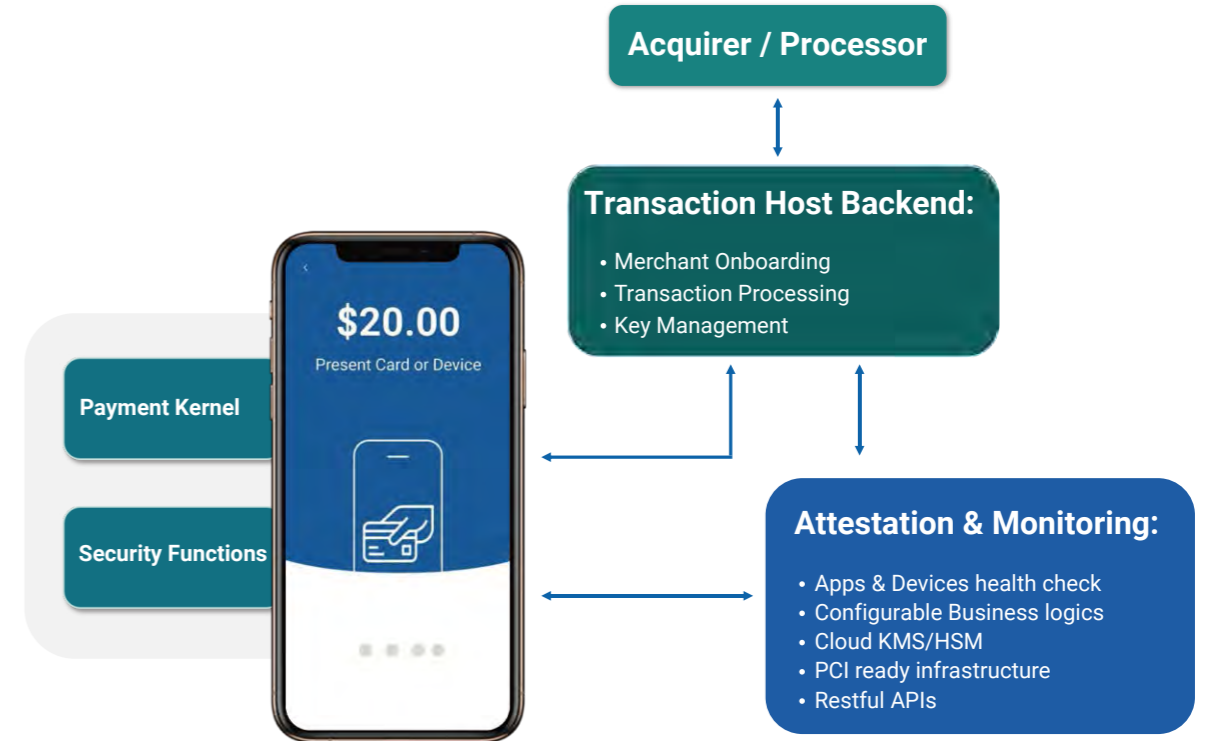
Our SoftPOS application enables businesses to accept payments securely and conveniently through contactless technology, enhancing customer safety and reducing transaction time.



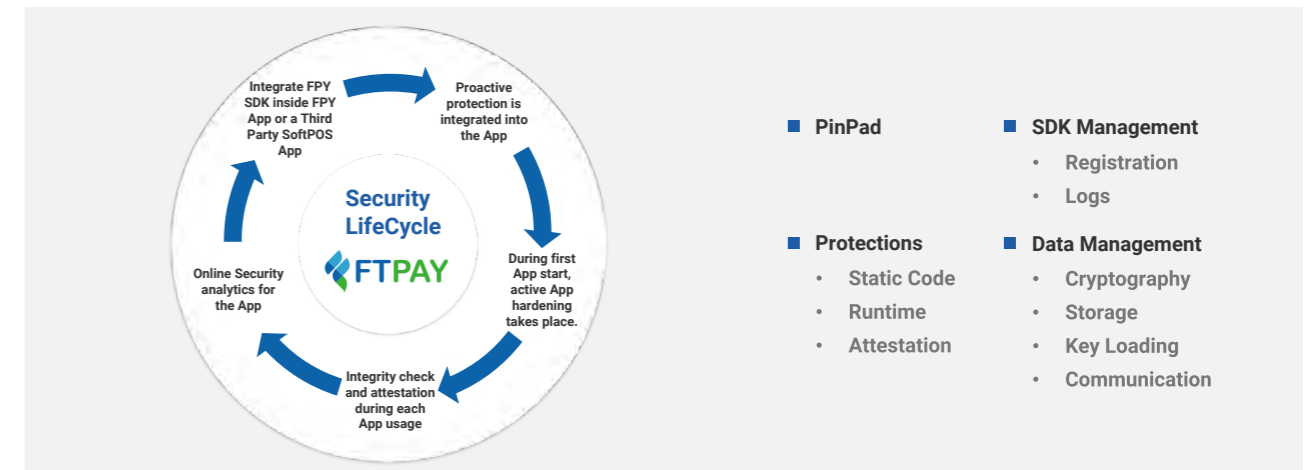
03. Seamless Integration:

With seamless integration capabilities, the FT PAY SoftPOS application effortlessly syncs with existing payment infrastructure and systems, streamlining operations for businesses of all sizes.

FTPAY Architecture



FTPAY Security



V11 Identification Terminal



SPECIFICATIONS

Operating System	Android 11
Processor	Quad-Core ARM A53
Memory	RAM: 3GB /ROM: 32GB
Communications	4G (LTE-FDD/LTE-TDD) + 3G (WCDMA) + 2G (GSM/GPRS), WiFi 2.4GHz/5GHz, BT4.2 (BR/EDR+BLE)
Location	GPS/AGPS, Beidou, GLONASS, Internal antenna
Display	5.0 inch, 1280 × 720, IPS
Cameras	Rear: 8MP AF with Flash Support Scanner 1D&2D code & QR Code Front: 5MP FF
GMS	Support Google mobile services
Battery	3.8V/5000mAh
SoftPOS	Support FT PAY(Feitian softPOS)
IC Card Reader	ISO/IEC 7816, ISO / IEC7816, T=0 and T=1 protocol, Class A, B, C cards
NFC	13.56MHz, ISO 14443 Type A and B, ISO 15693, Mifare, FeliCa Original NFC SDK by android system
Card Slot	Micro SIM*1 + PSAM*2, Micro SD*(up to 128GB)
Peripheral Ports	Type C*1(USB2.0, OTG)
Adapter	Input: 100-240V AC, 50/60Hz 0.35A Output: 5V DC/2.0A
Physical	204.5mm (L) × 80.6mm (W) × 24.6mm (H)
Weight	327g
Environment	Operating Temperature: 0°C ~ 60°C (0°F~140°F) Storage Temperature: -20°C ~ 85°C (-4°F~185°F) Relative Humidity: 5%-96% (Non-Condensing)
Accessories	Adapter*1, USB Cable*1, Hand strap*1
Certifications	CE, UN38.3

V20 Identification Terminal



V20



V20 FP Fingerprint

SPECIFICATIONS

Operating System	Android 9
Processor	Octa-Core, 8x1.8G, A53
Memory	RAM: 2GB /ROM: 16GB
Communications	4G (LTE-FDD/LTE-TDD) + 3G (WCDMA) + 2G (GSM/GPRS), WiFi 2.4GHz/5GHz, BT4.2 (BR/EDR+BLE)
Location	GPS/AGPS, Beidou, GLONASS, Internal antenna
Display	10 inch, 1280 × 800, IPS
Cameras	Rear: 8MP AF with Flash Support Scanner 1D&2D code & QR Code Front: 5MP FF
GMS	Support Google mobile services
Battery	3.8V/5200mAh
SoftPOS	Support FT PAY(Feitian softPOS)
IC Card Reader	ISO/IEC 7816, ISO / IEC7816, T=0 and T=1 protocol, Class A, B, C cards
NFC	13.56MHz, ISO 14443 Type A and B, ISO 15693, Mifare, FeliCa Original NFC SDK by android system
Card Slot	SIM*1 + PSAM*2, Micro SD*1(up to 128GB)
Peripheral Ports	Type A*2, Type C*1, RJ45*1, 3.5mm Earphone port*1, Mini HDMI*1
Adapter	Input: 100-240V AC, 50/60Hz 0.35A Output: 5V DC/2.0A
Physical	265.6mm (L) × 237.6mm (W) × 31mm (H)
Weight	1426g
Environment	Operating Temperature: 0°C ~ 60°C (0°F~140°F) Storage Temperature: -20°C ~ 85°C (-4°F~185°F) Relative Humidity: 5%-96% (Non-Condensing)
Accessories	Adapter*1, USB Cable*1, Hand strap*2
Certifications	CE, UN38.3