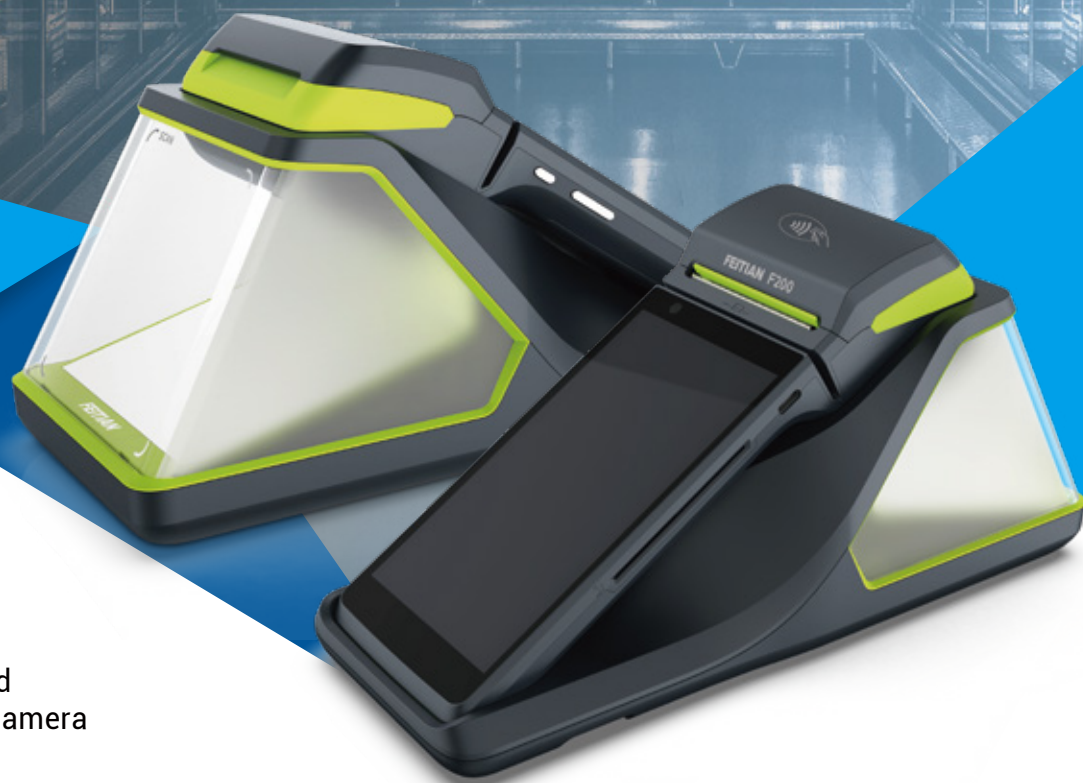


FEITIAN

F20 Multi-function Dock



High-speed scanning camera



Scanning fill light



Multiple connection ports



Retail



Supermarket



Restaurant



Hotel



Parking lot



Gas station

F20

SPECIFICATIONS

Multi Dock

Dimension	253 × 106.8 × 103.6mm
Weight	360g
Physical Ports	1 × Type-C, 1 × RJ11, 1 × RJ45, 2 × Type-A
Pogo Pin	8 pin
Scanner/Lighting	Scanner with F20
Certification	CE, RoHS

